

# FMP BM RD FF

## Universal Mini Posts

Base Mounted, Round Mini Post  
Friction Fit

### Technical Details

- No holes in glass required
- 316 Grade Stainless Steel
- Suitable for 12mm glass
- Supplied with dress ring to conceal structural fittings
- For details on custom designs and sizes please contact sales support on (03) 8562 0888

### Available Finishes

- Polished stainless steel
- Satin stainless steel

## Specify at time of order

- Finish required

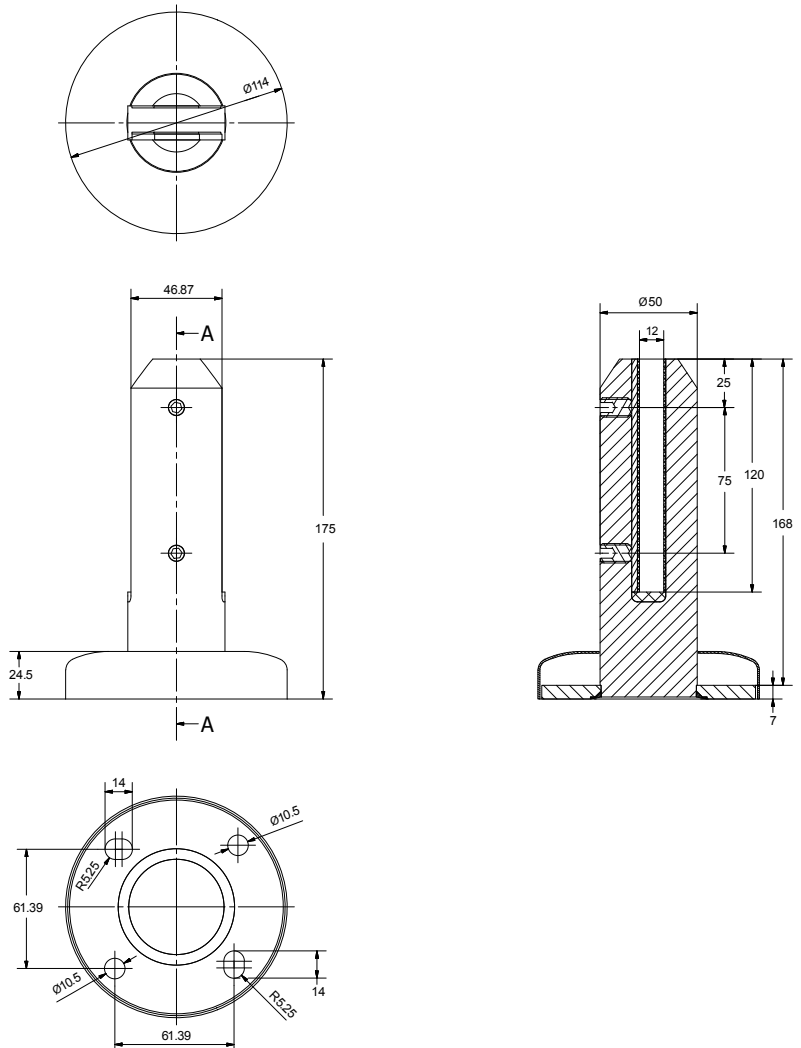
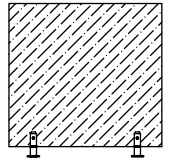
## Installation Instructions

- 1 Determine appropriate glass sizes by referencing the Pool Fence Guide on the page C7C or referring to a suitably qualified engineer for use in balustrades.
- 2 Fix mini post to structure in desired location using suitable fixing method.
- 3 Install glass into mini post, place cover plate on and secure by tightening 2 x M10 grub screws onto flat clamping plate.
4. Final adjustment as required and then re check all screws are tight.

**Note: For concrete decks we suggest HILTI HVU+HIS-RN M10 or equivalent anchors.**

**As construction of timber decks vary infinitely, we recommend consultation by a suitably qualified engineer to certify appropriate use in each application.**

**Installers should check with anchor manufactures for minimum distance from the slab edge.**



Code	Description	Price (ex gst)
FMP BM RD FF PSS	Mini Post Base Mounted Round Friction Fit Polished Stainless Steel	\$125.00
FMP BM RD FF SSS	Mini Post Base Mounted Round Friction Fit Satin Stainless Steel	\$125.00